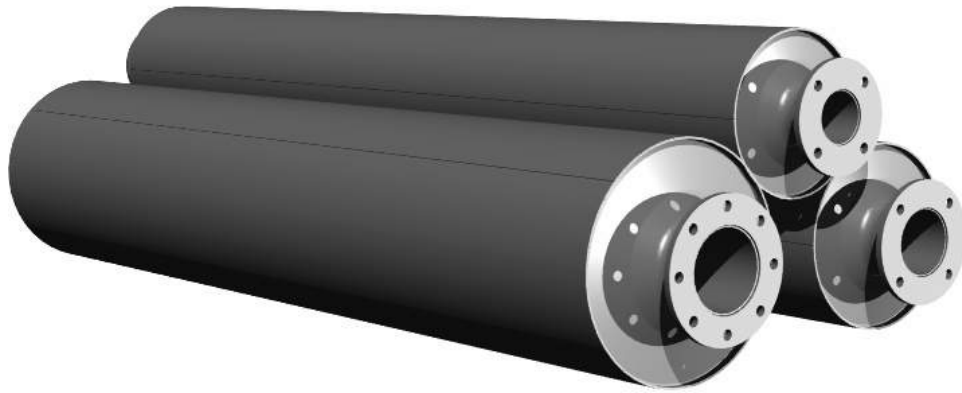


# Silentor® Classic



**SILENTOR**

Less pollution

More power

Patented technology since 1972

Silentor® Classic is a standard silencer based on Silentor's unique and patented technology for exhaust noise attenuation – a technology created during more than 30 years research and development.

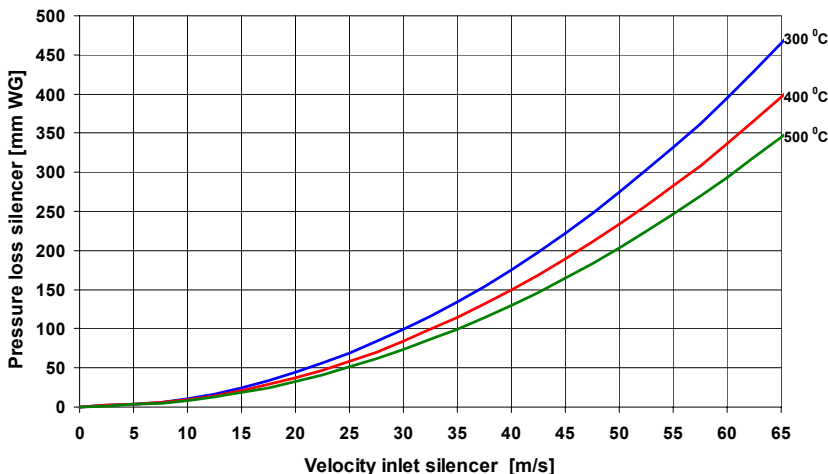
The Silentor technology combines absorptive and reflective attenuation with advanced aerodynamics in such a way that it is possible to achieve the best possible relationship between superior attenuation, low backpressure and limited volume.

Compared to traditional silencers, the Silentor technology is special because of the ability to attenuate the low-frequency noise including the very dominant noise from the firing frequency from four stroke engines.

Due to Silentor® Classic's unique attenuation performance in the low frequency area, Silentor® Classic silencers can be combined in series for use where attenuation requirements are very demanding.

All Silentor® Classic silencers 3-12 inch, centre outlet feature a spark arrestor as standard.

Silentor® Classic is the obvious choice for attenuation of exhaust noise from diesel- and gas engines for ships and vehicles, generators and power stations.



**Technical specifications:**

<b>Attenuation:</b>	Class 40 – 45 dB
<b>Pressure loss:</b>	See diagram
<b>Spark arrestor:</b>	Spark arrestor is tested and approved by Swedish Machinery Testing (SMP), regarding 3-12 inch, centre outlet
<b>Dimensions:</b>	See table below As an option the silencers can be supplied with side inlet and / or side outlet.
<b>Recommended gas velocity:</b>	Max 65 m/s (inlet velocity)
<b>Installation:</b>	To achieve maximum attenuation it is recommended to install the silencer as close as possible to the engine.
<b>Material:</b>	Mild steel S235 JR G2. As an option the silencers can be supplied in stainless steel.
<b>Surface treatment:</b>	Anticorrosive transport paint
<b>Accessories:</b>	Fixed flanges according to DIN2573 drilling pattern. Silencers 7" are normally without fixed flanges.



<b>Silentor<sup>®</sup> Classic CC</b>						
<b>Type</b>	<b>External dimensions [mm]</b>			<b>Flange [mm]</b>		<b>Weight (kilo)</b>
	A(ø)	B(ø)	E	J	K	
3"	88,9	280	2200	150	4 x ø18	50
4"	114,3	320	2200	170	4 x ø18	60
5"	139,7	400	2200	200	8 x ø18	80
6"	168,3	480	2200	225	8 x ø18	100
7"	193,7	560	2200	See technical specifications		130
8"	219	625	2570	280	8 x ø18	220
10"	273	806	2940	335	12 x ø18	350
12"	324	956	3100	395	12 x ø22	450

Silencers 3"- 12" CC are available from stock in mild steel, as illustrated above.  
Silencers can be supplied with side inlet and / or side outlet and also in larger sizes.  
As an option all silencers can be supplied in stainless steel.